

AGENDA
OCEANSIDE DEVELOPER'S CONFERENCE

Tuesday, June 17, 2014, 10:00 a.m.
Guajome Room

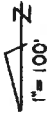
1. 10:00 a.m. - 11:00 a.m. Discussion of a subdivision for 10 to 12 homes located northwest of Loma Alta Drive and Walsh Street.

Zoning: RE-B (Residential Estate B)
Land Use: EB-R (Estate B Residential)
Neighborhood Area: Loma Alta
Assessor Parcel Number: 149-010-28
Contact Person: John L. Wismer
Tel.: 949-388-2397
Email: johnlwismer@aol.com

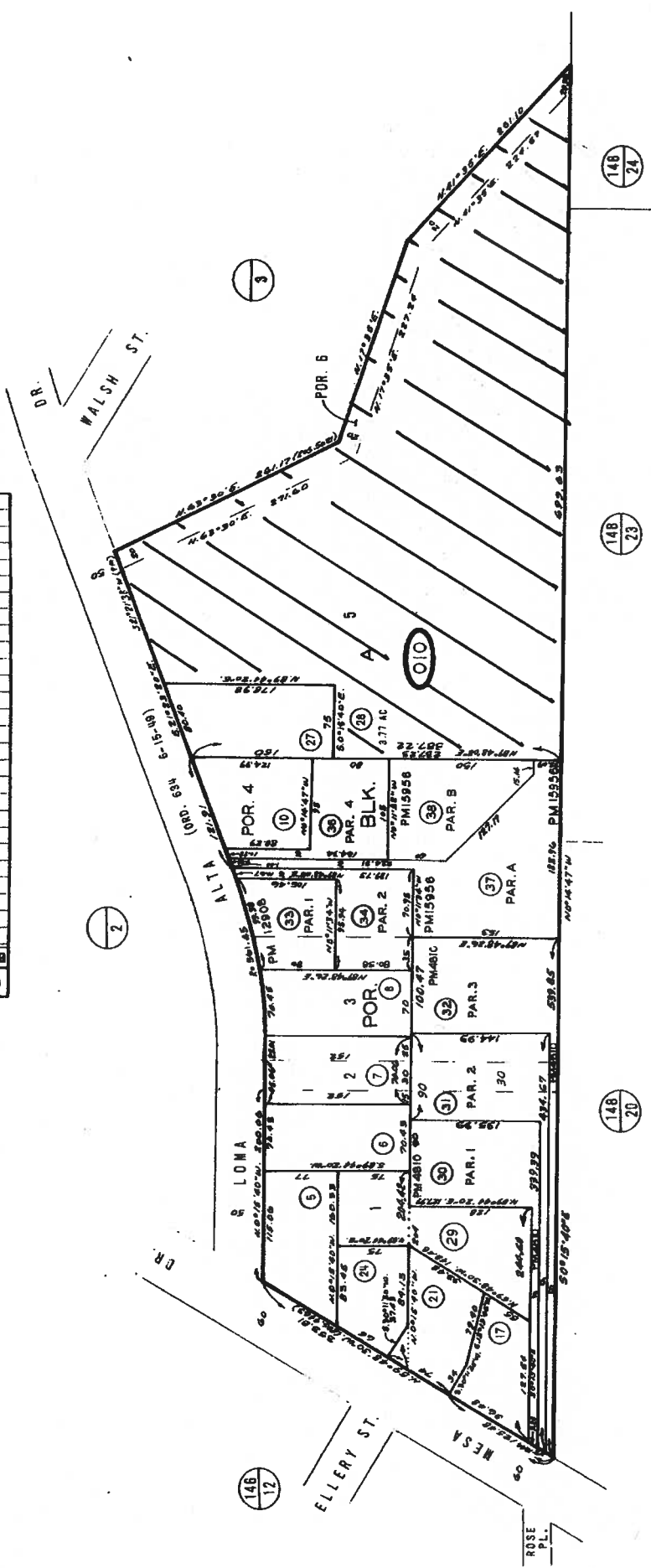
Attachments:

1. Maps
2. Project Description Letter
3. Proposed Elevations

149-01



CHANGES	
BLK OLD NEWR CUT	29 TO 28.5
141-N-38-277-091	9
33-56-84-2071	9
57-58-90-2084	35



MAP 1956 - ELLERY'S LOMA ALTA ADD

LS 307. ROS 4463

SAN DIEGO COUNTY ASSESSOR'S MAP BK 149 PG 01 MAPPED FOR ASSESSMENT PURPOSES ONLY



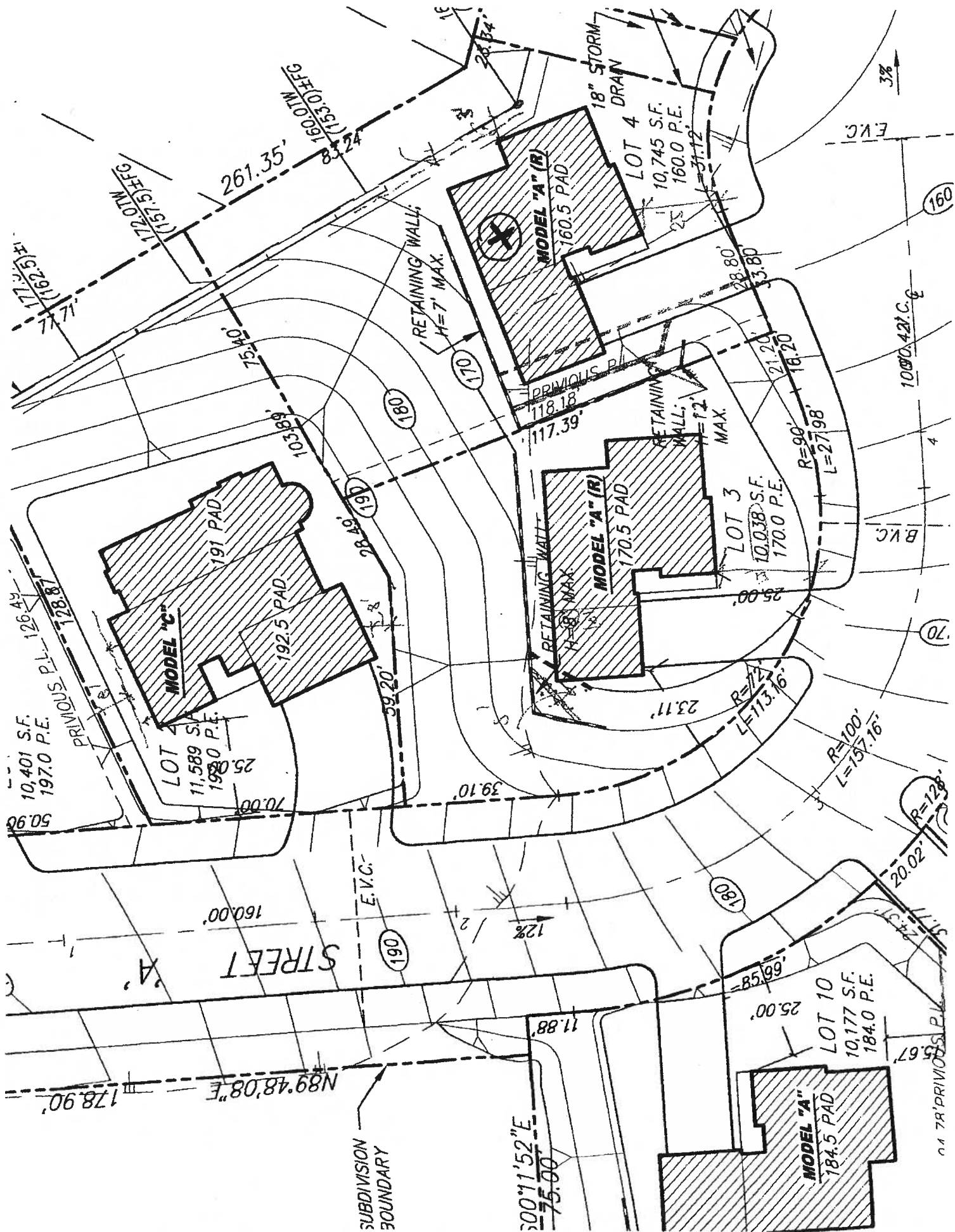
Blue Light Capital Corp.
Northstar Homes, Inc.
93 Fairlane Rd.
Laguna Niguel, Ca. 92677
949-388-1954

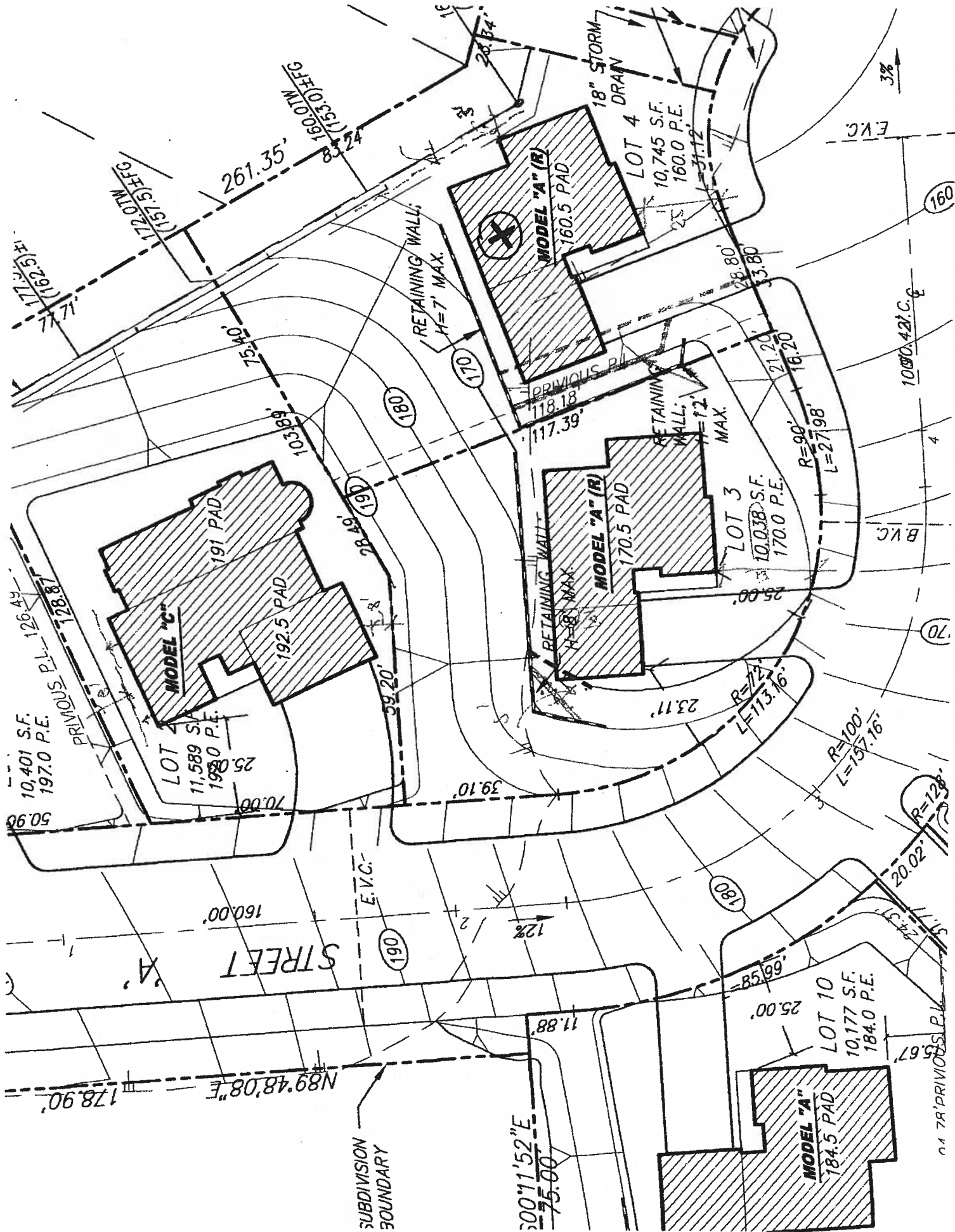
5/15/14

Re: APN 149-010-28
Loma Alta, Oceanside, Ca.

Project Description

Our project will consist of 10 to 12 homes. Each lot will be a minimum of 10,000 square feet. Homes will be in the range of 2,200 s.f. to 3,200 s.f. Both single and two story floor plans, with three car garages.







4 TYPE A COLORED WEST ELEVATION
 SCALE: 1/8"=1'-0"



2 TYPE A COLORED NORTH ELEVATION
 SCALE: 1/8"=1'-0"



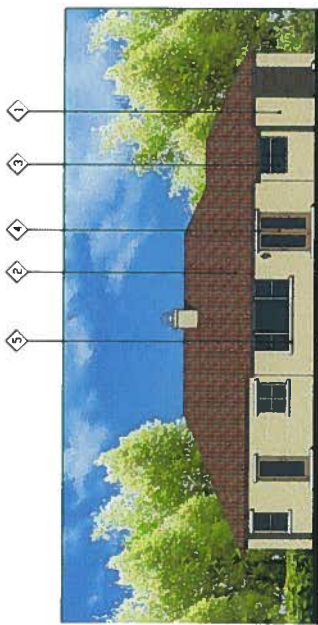
3 TYPE A COLORED EAST ELEVATION
 SCALE: 1/8"=1'-0"



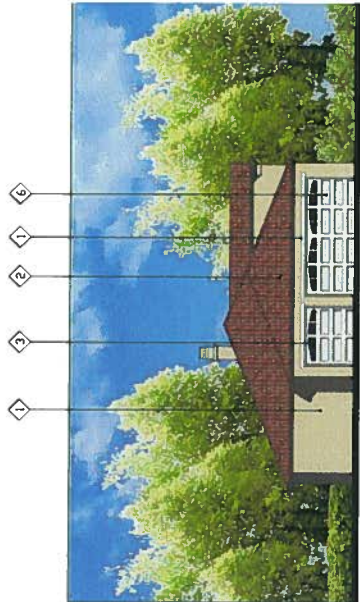
1 TYPE A COLORED SOUTH ELEVATION
 SCALE: 1/8"=1'-0"

KEY/NOTES

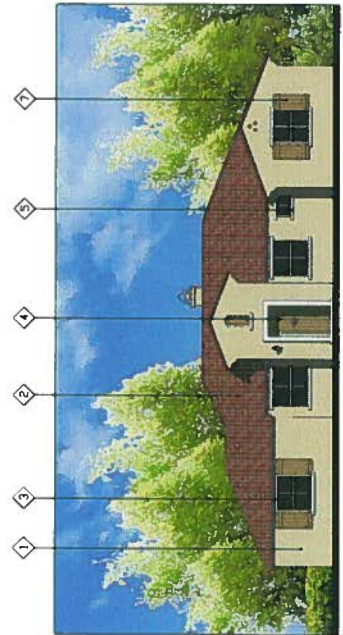
- 1 EXTERIOR COLOR: PLASTER
 COLOR MATCH DUNK EDWARDS (REV. 304) "WHISPER"
- 2 ROOF TILE
 EAGLE ROOFING CARPENTERS 3681
- 3 WINDOWS
 WHITE VINYL FRAME AND CLEAR GLAZING
- 4 ARCHITECTURAL WINDOW HOLDING
 COLOR MATCH DUNK EDWARDS (REV. 304) "WHISPER"
- 5 WINDOW FINISH
 COLOR MATCH WITH DUNK EDWARDS (REV. 304) "WHISPER"
- 6 EXTERIOR WOODS/ROOF BRW HAWK BAK
 COLOR MATCH DUNK EDWARDS (REV. 304) "WHISPER"
- 7 EXTERIOR DOOR
 COLOR MATCH DUNK EDWARDS (REV. 304) "WHISPER"
- 8 WOOD ENTRY DOOR
 COLOR MATCH DUNK EDWARDS (REV. 304) "WHISPER"
- 9 GARAGE DOOR
 WARRIOR DOORS
 1727 - SUNRAY DECORATION
- 10 WINDOW SHADES
 COLOR MATCH DUNK EDWARDS (REV. 304) "WHISPER"



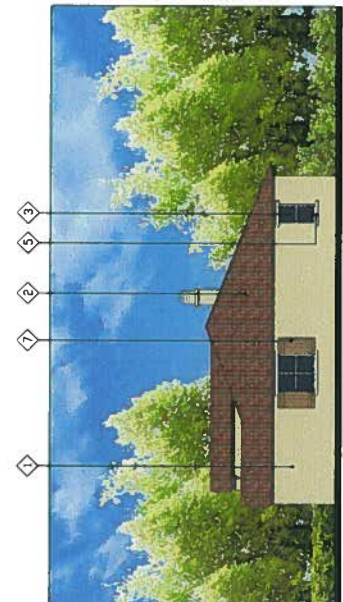
4 TYPE A COLORED WEST ELEVATION
 SCALE: 1/8"=1'-0"



2 TYPE A COLORED NORTH ELEVATION
 SCALE: 1/8"=1'-0"



3 TYPE A COLORED EAST ELEVATION
 SCALE: 1/8"=1'-0"



1 TYPE A COLORED SOUTH ELEVATION
 SCALE: 1/8"=1'-0"

KEYNOTES

- 1 EXTERIOR COUNTERTOP PLASTER
 COLOR MATCH DUNK EDWARDS #DC 742 "DUMED"
- 2 ROOF TILE
 EAGLE ROOFING CAPSTRONG 361
- 3 WINDOWS
 WHITE TRIM FRAME AND CLEAR GLAZING
- 4 EXTERIOR DOOR
 COLOR MATCH WITH DUNK EDWARDS #DEC 718 "STONESH
 BECK"

- 5 ARCHITECTURAL WINDOW MULDING
 COLOR MATCH DUNK EDWARDS #DCV 304 "WINDSOR"
- 6 GARAGE DOOR
 ALWAYS DOORS
 1277 - "SUMMIT DECORUM"
- 7 WINDOW SHAKES
 COLOR MATCH DUNK EDWARDS #DEC 718 "STONESH
 BECK"