



# MILITARY RESERVATION ELEMENT

CITY OF OCEANSIDE, CALIFORNIA

**Prepared by**

Planning Department  
City of Oceanside  
September, 1981

**Adopted by**

City Council  
City of Oceanside  
December 16, 1981  
Ordinance No. 81-407

**Text Reformatted in 2002 by**

Cotton/Bridges/Associates

Reformatting included the reorganization of the existing text, the addition of introductory material, expansion of Plan description, and revision of the Content and Relationship to Other General Plan Elements subsections.

(Figures were not reformatted.)

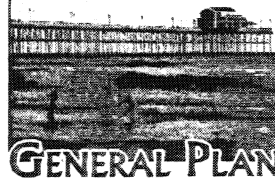


TABLE OF CONTENTS

<b>SECTION</b>	<b>PAGE</b>
<b>INTRODUCTION</b> .....	<b>1</b>
PURPOSE AND AUTHORITY .....	1
SCOPE AND CONTENT .....	2
RELATED PLANS AND PROGRAMS .....	2
RELATIONSHIP TO OTHER GENERAL PLAN ELEMENTS .....	4
<b>LONG-RANGE POLICY DIRECTION</b> .....	<b>5</b>
<b>MILITARY RESERVATION PLAN</b> .....	<b>6</b>



# MILITARY RESERVATION ELEMENT

## INTRODUCTION

Since Camp Pendleton was established in 1941, the City of Oceanside has served as the home community to the Marines and their dependents stationed at the Base. As a result of the City's physical proximity to the Base, there are strong physical, economic, and social ties between the two. The City adopted this element to recognize the importance of Camp Pendleton to the City of Oceanside, as well as the important support role the community provides to the Base and its operations.

### Purpose and Authority

The purpose of the Military Reservation Element is to acknowledge the direct physical, social, and economic linkages between Oceanside and Camp Pendleton and to propose policies that would strengthen the bond between the community and the Base.

The authority for this element is contained in Section 65300 of the government code, which requires that each city and county adopt a comprehensive, long-term general plan for the physical development within its boundaries, and also for any land outside its boundaries which in the agency's judgment bears relation to its planning. Since Oceanside proposes to annex Camp Pendleton to the City, it is necessary to adopt a General Plan and pre-zone the Base. Because of the unique status of Camp Pendleton as a federal military reserve, and the constitutional limitations on local land use authority over the Base, the City is addressing general plan issues for Camp Pendleton in a separate element.

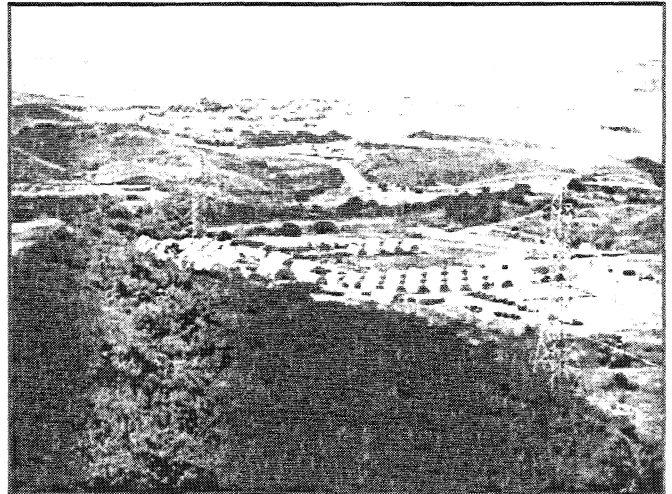


Photo <http://www.cpp.usmc.mil/tenant/rsu>, 2002.

## ***Military Reservation Element***

---

Because Camp Pendleton is a federal military installation, it is constitutionally exempted from all local land use controls. Furthermore, the Military Construction Act of 1972 prohibits the sale, lease, or transfer of any of the lands within Camp Pendleton for private purposes, unless expressly approved by Congress. This element affirms that existing land uses on the Base will remain under federal control and also acknowledges the strong ties between the Base and the City.

The foremost function of Camp Pendleton is as an essential part of the national defense network. Secondly, portions of the land within the Base are used for a nuclear power plant, two major transportation corridors (I-5 and the AT&SF Railroad), and a State Park Campground.

Finally, the Base also serves as a major stretch of open space along the Southern California coast, a buffer between San Diego and Orange Counties, and a wildlife preserve. The Base and the federal government continue to protect Camp Pendleton against urban encroachment.

### **Scope and Content**

The Military Reservation Element is not a state-mandated element. Since Camp Pendleton has such a strong direct physical, social, and economic link to the community, acknowledging the interrelatedness between Oceanside and the Base in a separate element is important. The Military Reservation Element is comprised of three sections: 1) Introduction; 2) Long-Range Policy Direction; and 3) Military Reservation Plan. In the Long-Range Policy Direction section, a goal and policies are identified to encourage the continued cooperation between federal and State governments and the City of Oceanside to ensure that the City and Base coexist in a compatible manner. The Military Reservation Plan section recognizes that, while Camp Pendleton directly impacts Oceanside, the City does not have any authority regarding the Base operations. Therefore, continued promotion of a good working relationship with the Base is the City's best approach.

### **Related Plans and Programs**

Several existing plans and programs directly relate to the goal and policies of the Military Reservation Element. These are plans and programs that relate to the operation of Camp Pendleton and San Onofre Nuclear Generating Station and are implemented by various federal, State, and local agencies.

#### ***Marine Corps Base Camp Pendleton Masterplan***

The Marine Corps Base Camp Pendleton Masterplan focuses on the training missions of the Marine Corps Base, attached Formal Schools, and supported Fleet Marine Force units. The primary objective of the masterplan is to develop concepts and accurately reflect current and projected future mission requirements. Some of the issues addressed in the masterplan

include ground and air operations, environmental issues, compatibility issues, and utility systems.

### *Pendleton 2020 (P2020) Plan*

Camp Pendleton is in the process of developing a 20-year plus planning perspective (Pendleton 2020 (P2020) Plan) for Land, Sea, Air, and Facility use that optimizes the amphibious training mission of Marine Corps Base Camp Pendleton. P2020 will develop and present alternative proposals for the effective, efficient, and synergistic use of Base Assets and Tenants to meet known and projected changes to the Base and Tenant missions over the next 20 years.

### *Marine Corps Base Camp Pendleton Strategic Plan*

The Marine Corps Base Camp Pendleton Strategic Plan “serves as a compass from which the future direction of the Base can be effectively and efficiently plotted.” A common focus for the Base is established in the Strategic Plan. Goals and an execution and monitoring plan are developed to achieve the plan’s vision for Camp Pendleton. Camp Pendleton regularly updates its Strategic Plan.

### *Integrated Natural Resources Management Plan (INRMP)*

The Marine Corps is in the process of completing an Integrated Natural Resources Management Plan (INRMP) for Marine Corps Base and Marine Corps Air Station Camp Pendleton. The goal of the plan is to integrate natural resources management with training and mission support requirements and responsibilities of the Base. The plan identifies natural resource management drivers (such as applicable laws and regulations), as well as goals, objectives, and a course of action.

### *San Onofre Nuclear Generating Station (SONGS)*

The San Onofre Nuclear Generating Station (SONGS) is located within the northern portion of Camp Pendleton. The federal and State governments have created three levels of emergency zones surrounding nuclear facilities:

- **Emergency Planning Zone:** Planning efforts within this zone include emergency sheltering and evacuations;
- **Public Education Zone:** Education programs are focused on in this zone to ensure that residents are prepared for any problems associated with the facility; and
- **Ingestion Pathway Zone:** The purpose of this zone is to avoid the accidental ingestion of deposited radioactive materials by humans and livestock.

Southern California Edison, which operates SONGS, will provide notification to all affected jurisdictions within 1.5 minutes of declaration of any emergency.

### **Relationship to Other General Plan Elements**

Within the General Plan, all elements are separate and distinct; they together comprise the General Plan. While each element is distinct, they all are interrelated to a degree, and certain goals and policies of each element may also address issues that are primary subjects of other elements. The integration of overlapping issues throughout the General Plan elements provides a strong basis for the implementation of plans and programs, and achievement of community goals. The following outlines how the Military Reservation Element relates to the other General Plan elements.

Since the Base is an extension of the community of Oceanside, the Military Reservation Element relates to all of the other General Plan elements. Traffic traveling to and from the Base passes through Oceanside, impacting local roadways. Therefore, planning for adequate circulation within Oceanside requires addressing the potential impacts created by Camp Pendleton within the Circulation Element. Similarly, personnel working and living on Base often use City community facilities, which are addressed in the Community Facilities Element.

Military and non-military activities occurring on Base have the potential to create public safety, hazardous waste, and noise impacts that may affect Oceanside. Military practice, including bombing practice and aircraft operation, create noise that impacts surrounding communities. The operation of the San Onofre Nuclear Generating Station generates hazardous waste and poses a public hazard in the event that it malfunctions. The Noise, Hazardous Waste Management, and Public Safety Elements of the General Plan include policies and plans to address these impacts on Oceanside.

Need for various land uses and housing within Oceanside generated by Base operation affects the land uses identified in the Land Use Element and the regional housing need addressed in the Housing Element. Since Camp Pendleton preserves one of the largest open space environments in the region, as well as providing recreational opportunities at the State Park Campground, the Military Reservation Element relates to the Recreational Trails Element and the Environmental Resources Management Element.



## LONG-RANGE POLICY DIRECTION

**GOAL:** To recognize that portion of the City under exclusive federal and/or State control and establish policies that will benefit both Camp Pendleton and the community as a whole.

**Policies:** The City shall:

- Recognize and support the vital defense mission of the Base.
- Support and assist the Marine Corps in its efforts to prevent encroachment on the Base from outside interests. (Specifically, the City opposes the construction of a regional airport or hazardous waste disposal facility on the Base.)
- Recognizes the San Onofre Nuclear Generating Station as a federal enclave, governed by federal regulations.
- Provide better municipal services and facilities in Oceanside to meet the needs of Camp Pendleton residents.
- Provide municipal services and facilities on the Base as deemed desirable and necessary, if requested by the State or federal governments.
- Encourage the State of California to continue to upgrade public recreational facilities at the San Onofre State Park.
- Promote the development of affordable housing both on- and off-base to meet the needs of the Camp Pendleton population.
- Strive to upgrade vehicular access to and from the main gate and back gate.
- Encourage the provision of wholesome recreational opportunities within the City for residents of the Base.
- Foster improved relations between the City's civilian and military population by encouraging broader participation in community affairs.

## **OCEANSIDE MILITARY RESERVATION PLAN**



Land use within the boundaries of Camp Pendleton is regulated by the federal government (for Marine Corps Base and Nuclear Generating Station) and the State government (for the State Park lands). The City does not have the authority nor the desire to establish urban land uses within the Base. Since the City does not have any authority over the use of the Base, the intent of the City is to continue to work closely with the federal and State governments in a manner that benefits both the Base as well as the City of Oceanside.



Photo taken from [www.cpp.usmc.mil/mcas/index.htm](http://www.cpp.usmc.mil/mcas/index.htm), 2002.