



# TABLE OF CONTENTS

INTRODUCTION

LAND USE ELEMENT

CIRCULATION ELEMENT

RECREATIONAL TRAILS ELEMENT  
(SUB-ELEMENT OF THE CIRCULATION ELEMENT)

HOUSING ELEMENT

ENVIRONMENTAL RESOURCE MANAGEMENT ELEMENT

COMMUNITY FACILITIES ELEMENT

PUBLIC SAFETY ELEMENT

NOISE ELEMENT

HAZARDOUS WASTE MANAGEMENT ELEMENT

MILITARY RESERVATION ELEMENT

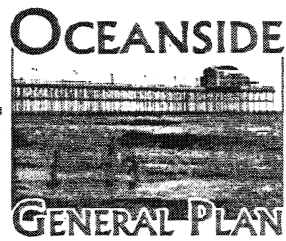
GENERAL PLAN APPENDICES

APPENDIX A - REDEVELOPMENT PLAN

APPENDIX B - LOCAL COASTAL PROGRAM LAND USE PLAN

APPENDIX C - GLOSSARY

APPENDIX D - INDEX



# INTRODUCTION TO THE GENERAL PLAN

CITY OF OCEANSIDE, CALIFORNIA

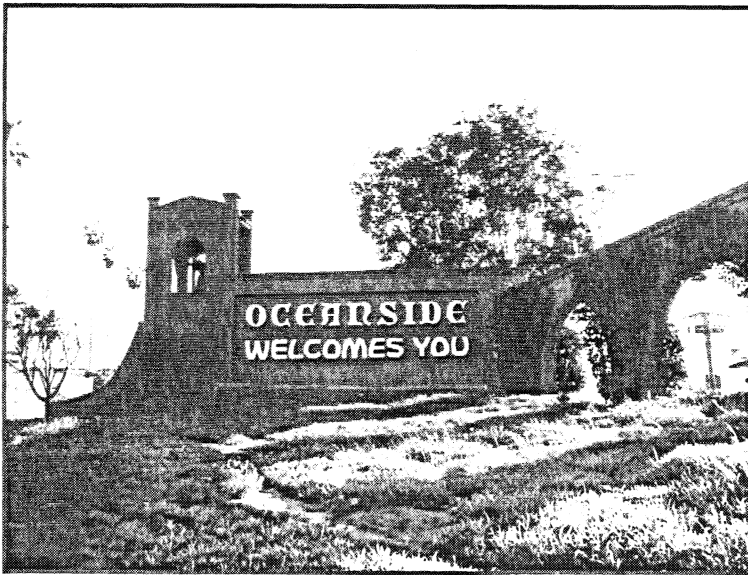
Prepared by

Cotton/Bridges/Associates  
2002

## INTRODUCTION

Incorporated in 1888, the City of Oceanside is one of the oldest cities in the region. The community's European history began almost 100 years prior to incorporation with the establishment of Mission San Luis Rey de Francia. Since incorporation, the City has continued to grow at a substantial rate, creating the third largest city in the region in both population and geographic size as of the year 2000. As the community continues to grow and change, the City needs to plan how to address and direct growth within the City.

The Oceanside General Plan is the primary source of long-range planning and policy direction that will be used to guide growth and preserve the quality of life within the City of Oceanside. The General Plan contains 10 elements, as described below.



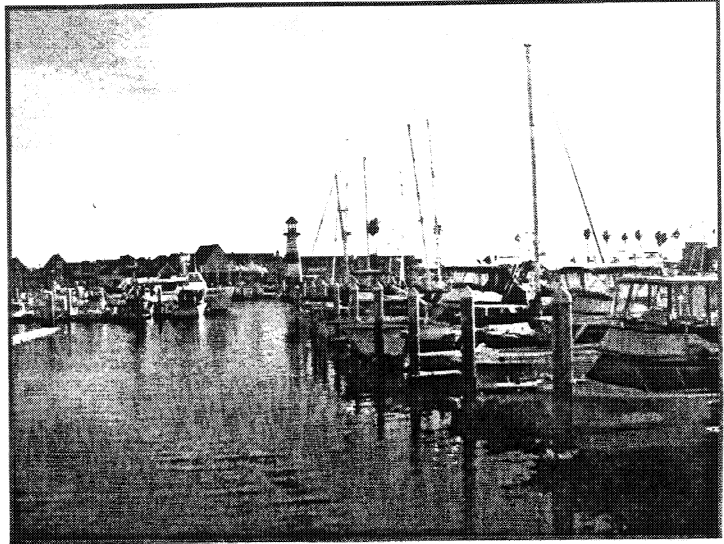
Many of the General Plan elements were adopted in the 1970's, while others were adopted more recently due to changes in State law or changes in the conditions affecting Oceanside. As the community grows and changes, the various elements will continue to be updated and amended to ensure that the guidance they provide for future growth within the community reflects the actual desires of the residents and businesses of Oceanside.

To address change, the General Plan serves as a policy guide for determining the appropriate physical development and character of Oceanside. The plan is founded on the community's vision for Oceanside and expresses the community's long-range goals. Implementation of the General Plan will ensure that future development projects are consistent with the community's goals and that adequate urban services are available to meet the needs of new development.

In 2002, the City reformatted the General Plan. The purpose of this task was to improve the readability of the General Plan, creating a consistent format that each element would follow.

## Oceanside Planning Area

The City of Oceanside contains approximately 42 square miles of land and is located in northern San Diego County, 35 miles north of San Diego and 80 miles south of Los Angeles. The community is located along the Pacific Ocean, providing the City with its name. Oceanside is traversed by several major roadways, including the north-south Interstate 5 Freeway and the east-west State Highways 78 and 76. The City is bordered by the cities of Vista and Carlsbad to the south, unincorporated portions of San Diego County to the east, and the U.S. Marine Corps Base Camp Pendleton to the north.



Unless stated in the an individual element, the planning area for the General Plan elements includes all of land within the City limits at the time the various General Plan elements were prepared. Those elements that include land in addition to the incorporated City define the study planning area in the introduction to the element. For some of the elements, especially the older elements, the planning area includes unincorporated lands that were within the City's sphere of influence at the time the element was adopted. Where appropriate, other areas that are not currently proposed for annexation, yet due to their proximity to the City and other planning considerations have the potential to affect Oceanside, are also included in the planning area for the purposes of a specific element. One example is the Military Reservation Element that analyzes the impact of Camp Pendleton on Oceanside even though the base is not within the City limits or sphere of influence.

## Vision 2020 for Oceanside

Each of the General Plan elements contains goals for the future of Oceanside. In addition, the City undertook the *Vision 2020* Project in the late 1990's to identify vision statements for the future of the community. The following is a summary of the visioning statements that resulted from the *Vision 2020* project:

The City of Oceanside will:

- Promote friendly, well-planned, coherent business development, with active participation by its business owners. Tourism and light industry will be leading contributors to the economic base.
- Pro-actively facilitate access to user-friendly, state-of-the-art, two-way interactive telecommunication services, affordably priced, and accessible to the community.
- Expand cooperative partnerships with business, community groups, neighborhoods and schools to promote and enhance services while developing and maintaining the highest aesthetic standards throughout the community.
- Recognize and support all of the arts as essential to the quality of life in the community and as a motivating force to awaken the economic potential of the community.
- Support life-long learning through universal access to information for its residents, serving all educational, civic, cultural, business, and other social and community needs.
- Be, and will be perceived as, clean, safe, secure, and conducive to good health and well-being; a community in which people enjoy living, working and playing.

### Purpose of the General Plan

California State law requires each city to adopt a comprehensive, long-term General Plan to guide the physical development of the incorporated city and land outside of the city boundaries that bears a relationship to its planning activities. In essence, a city's General Plan serves as the blueprint for future growth and development. As a blueprint for the future, the plan must contain policies and programs designed to provide decision makers with a solid basis for decisions related to land use and development.



The Oceanside General Plan addresses many issues that are directly related to and influence land use decisions. In addition to land use, State law requires the General Plan to address circulation, housing, conservation of natural resources, preservation of open space, noise environment, and protection of public safety (Section 65302 of the California Government Code).

These issues are discussed in the General Plan to the extent that they apply to Oceanside. The plan also addresses topics of special and unique interest, including community facilities, hazardous waste management, and Camp Pendleton.

According to State law, the General Plan is the primary document the City utilizes to regulate land

## Introduction

---

use. Consequently, the Zoning Ordinance, Specific Plans, and individual public and private development proposals must be consistent with the General Plan goals, objectives, policies, and standards.

### Organization and Use of the General Plan

The City of Oceanside General Plan contains goals, objectives, policies, and plan that are intended to guide land use and development decisions in the future. The General Plan consists of a Land Use Map and the following 10 elements, or chapters that together fulfill the State requirements for a General Plan:

#### State Mandated Elements

- Land Use Element
- Circulation Element
- Recreational Trails Element (as a sub-element of the Circulation Element)
- Housing Element
- Environmental Resources Management Element
- Public Safety Element
- Noise Element

#### Optional Elements

- Community Facilities Element
- Hazardous Waste Management Element
- Military Reservation Element

Table I-1 shows that relationship between the 10 elements of the Oceanside General Plan and the State-mandated elements. The Oceanside elements sometimes deviate from the State-mandated elements in non-substantive ways. For example, public utilities are included in the State requirements for the Circulation Element, but are addressed in the Community Facilities Element of the Oceanside General Plan.



**Table I-1  
Relationship of Oceanside General Plan Elements  
to State-Mandated Elements**

Oceanside General Plan Elements	Land Use	Housing	Circulation	Safety	Conservation	Open Space	Noise	Optional
<i>Land Use</i>	X							
<i>Circulation</i>			X					
<i>Recreational Trails</i>			X					
<i>Housing</i>		X						
<i>Environmental Resource Management</i>					X	X		
<i>Community Facilities</i>			X					X
<i>Public Safety</i>				X				
<i>Noise</i>							X	
<i>Hazardous Waste Management</i>								X
<i>Military Reservation</i>								X

### Way to the Future

The General Plan provides the way to achieve the future the community has identified for itself. Direction is the General Plan to take advantage of opportunities to achieve the community's goals for the future. The policies and plans in the elements provide guidance for dealing with changing conditions and specific actions to optimize the community potential.