



Climate Action Plan/CAP Consistency Checklist

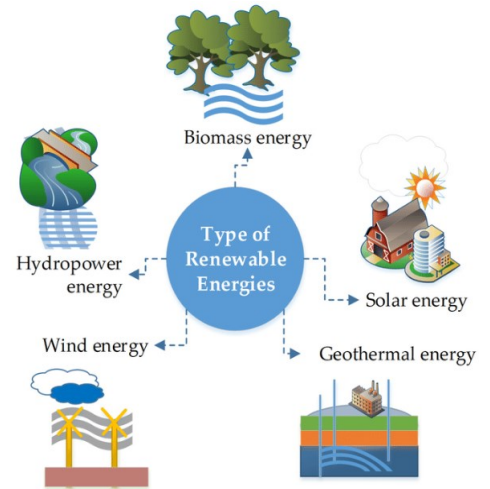
On-Site Renewable Energy

Standards are detailed in Section 3047 of the City's Zoning Ordinance.

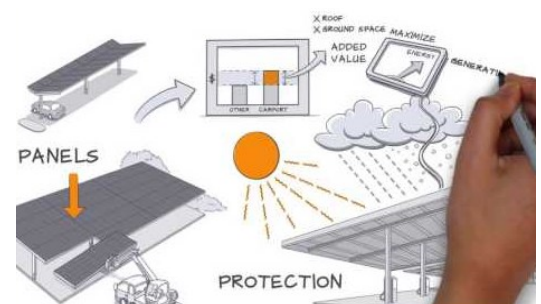
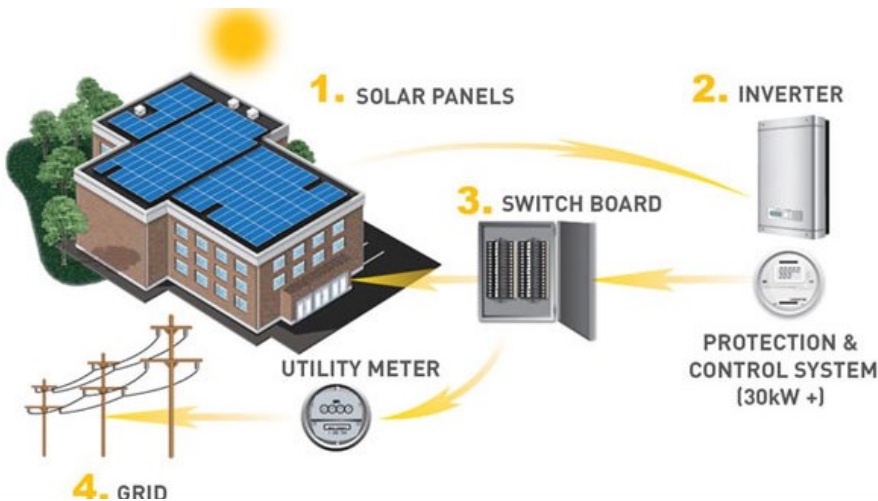
As part of an effort to reduce greenhouse gas (GHG) emissions associated with energy consumption, the City of Oceanside requires the projects listed below to offset at least 50% of their forecasted energy demand by incorporating on-site renewable energy sources:

- Residential projects that include 25 or more units
- Industrial projects larger than 25,000 square feet
- Commercial projects larger than 12,500 square feet
- Institutional projects larger than 12,500 square feet
- Mixed-use projects larger than 12,500 square feet

Additionally, all development projects over 1,500 square feet are required to be "Solar Ready" per the California Energy Code and California Green Building Standards Code.



Renewable energy refers to energy that comes from natural sources or processes that are constantly replenished, such as solar or wind.



Solar Ready design is implemented when designing the building's rooftop and associated equipment. The intent is to reserve a penetration-free and shade-free portion of the roof for the potential future installation of solar panels.

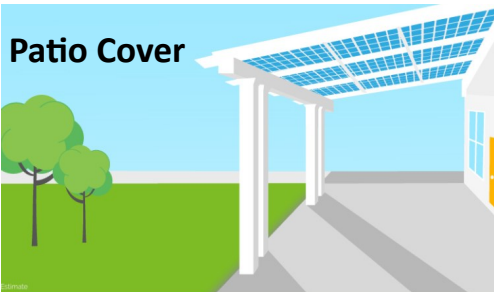


Climate Action Plan/CAP Consistency Checklist

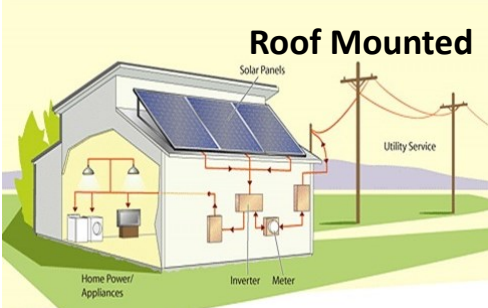
On-Site Renewable Energy: Solar Panels

Solar PV Installation Systems

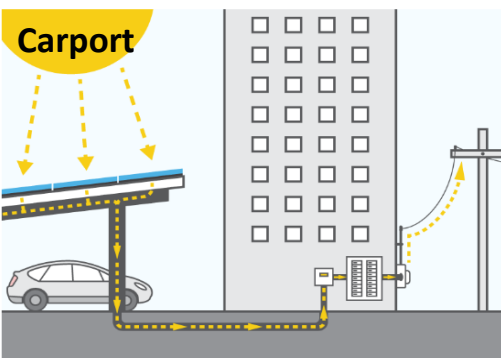
Patio Cover



Roof Mounted



Carport



Ground Mounted



Solar PV panels generate electricity without releasing emissions and reduce electricity demand from non-renewable energy generation. Benefits of solar include: **reduced carbon footprint, lower utility bills, increased property value, and tax credits and/or rebates.**

Solar PV Financing Options

1. **Buy.** Purchase solar PV system and own the entire system.
2. **Home Equity Loan.** Secured to finance the system.



3. **Lease.** Rent the system for a set time period. Pay a fixed monthly rate. *Most common option.*
4. **Power Purchase Agreement (PPA)** . Similar to a lease, but monthly payment is based on every kWh the solar system produces instead of a fixed monthly rate.
5. **Property Accessed Clean Energy Program (PACE)** . System is financed through an assessment collected with property taxes.

If unfeasible to install on-site solar panels, alternatives to meeting renewable energy requirements include programs such as [EcoChoice](#) and [EcoShare](#). Information on these programs is available thru [SDG&E](#).

To better understand the basis for the City's on-site renewable energy requirements, see

Emission Reduction Measure E-2 in the City's [Climate Action Plan](#).