



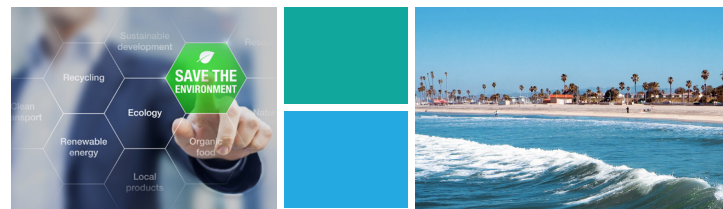
Enclosure and Service Guide Solid Waste, Recycling and Organics



Design requirements for **efficient**
collection, storage and servicing
of **solid** waste, commingled
recycling, green waste and
organic **material**.

Reduce, Reuse, Recycle, Rot, Rethink = Road to  Waste

greenoceanside.org



Introduction

This manual will address design requirements to allow for the efficient collection, storage and servicing of solid waste, commingled recycling, green waste and organic material. The City Contract Administrator shall have final approval over safety factors, service levels and space requirements including specifications, access, proper distance, height and clearances. Please note the use of this manual does not negate submittal and approval of detailed plans for any project concerning waste.

Regulatory Requirements

The City of Oceanside Municipal Code Chapter 13 requires that Oceanside residents, businesses and multifamily projects are to separate all recyclable material from other solid waste. Additionally, the State of California regulations require all California businesses participate in Mandatory Commercial Recycling (Assembly Bill 341) and Mandatory Commercial Organics Recycling (Assembly Bill 1826) as outlined in more detail below.

AB 341: Mandatory Commercial Recycling

California Assembly Bill 341 requires both businesses that generate four cubic yards or more of solid waste and multifamily projects with 5 units or more to participate in a recycling program.

AB 1826: Mandatory Organic Waste Recycling

California Assembly Bill 1826 requires businesses, including public entities and multifamily projects to recycle their organic waste. Businesses must develop strategies to reduce and/or arrange for recycling services for the following types of organic waste: food waste, food-solid paper, green waste, landscaping and pruning waste, and non-hazardous wood waste.

SB 1383: Short-Lived Climate Pollutants

California Senate Bill 1383 established methane emission reduction targets for California, requiring a 50% reduction of organics heading to the landfill by 2020 and 75% reduction by 2025.

City Code Chapter 13

The City Code Chapter 13 requires the separation of all recyclable materials from solid waste. Properties are required to provide enclosures with adequate space for the collection, storage and separation of all recyclable material from solid waste. At a minimum solid waste, commingled recyclables and organics must be collected once per week. Service levels must be adequate to maintain the property and keep material in containers with closed lids.

Zero Waste Strategic Management Plan

Oceanside's Zero Waste Strategic Management Plan outlines the city's diversion goal of 75-90% by 2020. To meet this goal, Oceanside requires businesses and multifamily projects to have equal services for solid waste, commingled recycling and organics, as services are available.

California Fire Code

Solid waste, commingled recycling and green waste/organic waste disposal systems and storage areas must comply with current California Fire Code. For more details, see general City fire code requirements section 304.

Waste Enclosure Standards for Commercial and Multifamily

The following standards are for commercial and multifamily projects with dumpster services. Property types include, but are not limited to, office, industrial, retail, restaurants, multifamily, (condos, apartments, townhomes) hotels, mixed-use, hospitals/clinics, churches and other waste generators. Dumpster service is available up to six times a week.

See Appendix A for minimum service requirements.

- Collection areas must provide adequate storage and equal opportunity for a three-stream waste system: solid waste, commingled recycling and organic material.
- Projects less than 15,000 square feet or 12 dwelling units shall provide a minimum of one enclosure with space for (1) 3-yard solid waste dumpster, (1) 3-yard recycle dumpster and (1) 3-yard green waste/organic dumpster.
- Projects greater than 15,000 square feet or 13 dwelling units shall provide multiple enclosures, each with space for (1) 3-yard solid waste dumpster, (1) 3-yard recycle dumpster and (1) 3-yard green waste/organic dumpster. Projects may require one or more enclosures for every 15,000 square feet depending on project design. Enclosures should be located within 150 feet from each other.
- Corner sight distance should be considered when locating enclosures at project entry points located next to alleys and public streets. Service areas should be located and designed for convenient access by waste generators, for easy access by hauler and to minimize circulation conflicts. Enclosures should be designed, located and integrated into the master site plan.
- Projects that require multiple water meters may be subject to additional enclosure requirements. The City of Oceanside does not permit split billing systems.
- Enclosures shall be constructed of non-combustible, six-foot high masonry or block with locking gates. The enclosure should be designed to be consistent with the project and surrounding buildings. The walls and gates should be decorated to complement the color scheme of the immediate building(s) and provide overhead weather-protection. City recycling signage should be displayed on the front of each enclosure and on pedestrian access doors.
- Enclosure access gates must open 120 degrees minimum and include cane bolt or similar locking mechanism. Enclosures should provide safe waste generator access.
- Enclosures should be surrounded by 24" of landscaping to reduce water run off. No storm drains should be located inside or in the immediate vicinity of the enclosure.
- There must be at least 25' of overhead clearance above the collection areas to avoid damage and service interference.
- Enclosures should provide unobstructed direct hauler access if available. Additional service fees may apply for indirect or pull out service.
- All roads, alleys or service ways must provide an unobstructed path of at least 15' high and 12' wide to ensure safe access. Enclosures may not be placed in public right of way.
- Enclosure collection areas may require a reinforced concrete apron of 24' x 12' with 3' extension beyond enclosure wall. Maximum slope of 4% for surrounding service area.
- Plans must clearly indicate the proposed location for waste collection and include details of the enclosure with plan dimensions and service level requirements. Projects may apply for centralized waste collection system.

Cart Standards for Multifamily and Commercial

The following standards are for multifamily and commercial projects with cart service for solid waste, commingled recycling and green waste/organic waste may be available per City approval for the following projects including but not limited to: residential, multifamily, (condos, apartments, townhomes) and commercial generators that may require minimal service. Residential cart service is reserved for single family and multifamily projects.

See Appendix A for minimum service requirements.

- Multifamily cart service includes weekly service for three 96-gallon wheeled carts, solid waste, commingled recycling and green waste/organics.
- Commercial cart service includes weekly or bi-weekly service for two 96-gallon wheeled carts, solid waste and commingled recycling.
- Projects must provide concealed storage for all carts. Storage location shall not be placed in public right away. The storage area may not impact vehicle or public access.
- A concrete, grass or other continuous all-weather surface shall be provided to roll the carts between the storage areas and hauler set out area.
- Plans must clearly indicate the proposed location for waste collection and include details of the enclosure with plan dimensions and service level requirements.
- Stormwater requirements may apply if cart storage area is located outside.

Chute Room Design Standards

These standards are for projects with underground or limited access waste services. Property types include, but are not limited to office, industrial, retail, restaurants, multifamily, (condos, apartments, townhomes) hotels, mixed-use, hospitals/clinics, churches and other waste generators. Dumpster service is available up to six times a week.

- Chute waste projects must be pre-approved and provide a three-chute waste system: solid waste, commingled recycling and organics.
- Projects with underground collection services must provide unobstructed pull out access without curbs, rolled curbs or pavement gaps that would limit hauler access of the dumpster(s) from the street. Additional service fees may apply for pull out service.
- Chute room design and projects must comply with fire code regulations.
- Plans must clearly indicate the proposed location for waste collection and include details of the enclosure with plan dimensions and service level requirements.

Compactors Service Design Standards

These standards are for projects with heavy usage that can provide adequate space, power and access for centralized waste compactor service. Property types include, but are not limited to office, industrial, retail, restaurants, multifamily, (condos, apartments, townhomes) hotels, mixed-use, hospitals/clinics, churches and other waste generators. Dumpster service is available up to six times a week.

- Compactors must be located in an accessible area away from public view and compatible with all franchise hauler requirements.
- Compactor area must include a minimum 4-inch reinforced concrete pad with City approved apron to fit, but not limited to a 40-yard compactor system.
- The compactor access gates must open 120 degrees minimum and include cane bolt or similar locking mechanism.
- The project must provide sufficient heavy power, block wall, all weather roof and water run off area along with staff and hauler access.
- Plans must clearly indicate the proposed location for compactor and include details of the collection area with plan dimensions and service level requirements.
- Compactor service areas should provide unobstructed direct hauler access if available. Additional service fees may apply for indirect or pull out service.



**Compactors are available for both landfill and recycling service.
Please contact Waste Management for more information
on compactors (760) 439-2824.**

Appendix A

Solid Waste, Recycling & Organic Collection

Minimum Service Levels

- One unit of commercial cart service is required for each water meter registered to a commercial business.
- Multifamily projects require two units of commercial cart service for every 4 dwelling units. Projects with 9 or more dwelling units require dumpster services.
- If services are deemed to be inadequate or create a public nuisance the City reserves the right to adjust services.
- It is the waste generator's responsibility to notify Waste Management of missing or broken carts and locks
- Dumpster Service is available in 3-yard, 4-yard and 6-yard containers for both solid waste and recycling with service up to six days per week. City Code Chapter 13 further explains waste enclosure requirements.
- Split Bin Service is available for businesses with limited space for solid waste and recycling service. The available dumpster is 3-yards that is split down the middle to accommodate both solid waste and recycling.
- Commercial Cart Service is reserved for multifamily projects with 8 or less dwelling units/ or small businesses on a case-by-case basis. One unit of commercial cart service includes one 96-gallon solid waste cart and one 96-gallon recycling cart serviced once per week. Commercial can include pull out services to minimize customer impact.



DUMPSTER DIMENSIONS				
Bin Size (cubic yards)	Depth (inches)	Width (inches)	Height (inches)	Vertical Clearance (inches)
3	42	82	58	108
4	50	82	64	126
6	68	81	72	140



3 yard recycle dumpster
58”H x 82”W x 42”D



3 yard solid waste dumpster
58”H x 82”W x 42”D



3 yard split bin dumpster
58”H x 82”W x 42”D

CART DIMENSIONS				
Cart Size (gallons)	Depth (inches)	Width (inches)	Height (inches)	Vertical Clearance (inches)
96	33.7	28.5	45.7	82



96-gallon cart
45.7”H x 28.5”W x 33.7”D



96-gallon cart
45.7”H x 28.5”W x 33.7”D

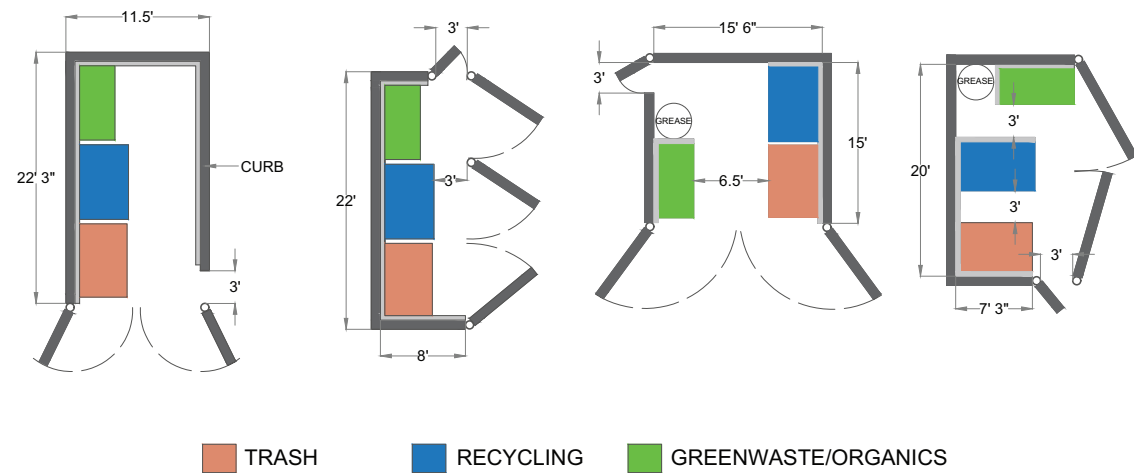


96-gallon cart
45.7”H x 28.5”W x 33.7”D

For additional information or questions please visit greenoceanside.org or email oceansiderecycles@ci.oceanside.ca.us

Enclosure Construction Design Examples

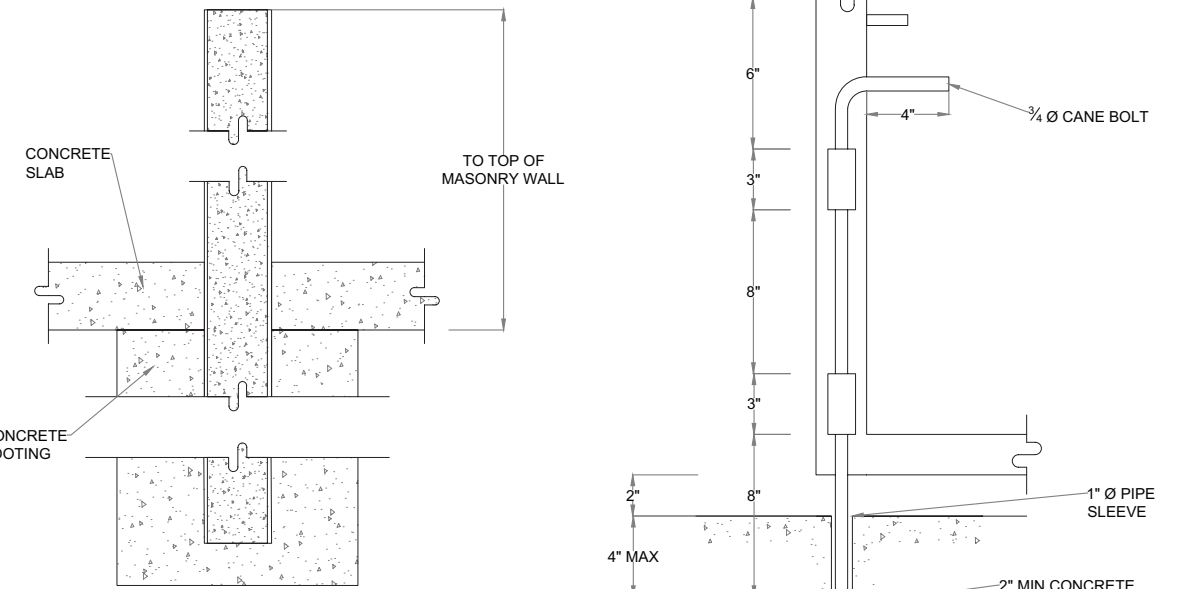
AERIAL WASTE ENCLOSURE DESIGN EXAMPLE



- ALL FIGURES INCLUDE TWO 3 CUBIC YARD DUMPSTERS AND ONE 2 CUBIC YARD ORGANIC DUMPSTERS.
- GREASE BARREL MEASURES 36" IN DIAMETER.
- ALL MATERIAL MUST BE NONCOMBUSTIBLE AND COMPLIANT WITH CURRENT CALIFORNIA FIRE CODE.
- GENERAL ENCLOSURE EXAMPLES PROVIDED ARE NOT TO SCALE AND MAY REQUIRE ENGINEER/ARCHITECT DESIGN.

DRAWING TITLE:	DATE:	SCALE:
OCEANSIDE # 1	08/16	NTS
	CODE:	SHEET:
	OS1	01 of 01

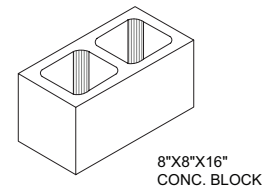
Enclosure Construction Design Examples



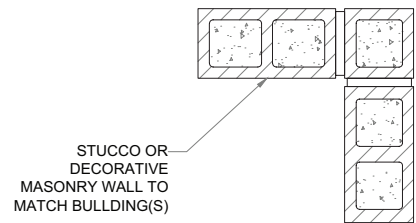
WASTE ENCLOSURE FOOTING EXAMPLE
NOT TO SCALE

CANE BOLT EXAMPLE
NOT TO SCALE

DRAWING TITLE:	DATE:	SCALE:
OCEANSIDE # 3	08/16	NTS
	CODE:	SHEET:
	OS1	01 of 01

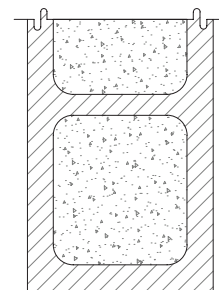


CMU DETAIL 1

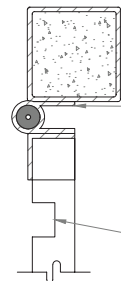


CMU WALL CORNER EXAMPLE

- ALL MATERIAL MUST BE NONCOMBUSTIBLE AND COMPLIANT WITH CURRENT CALIFORNIA FIRE CODE.
- GENERAL ENCLOSURE EXAMPLES PROVIDED ARE NOT TO SCALE AND MAY REQUIRE ENGINEER/ARCHITECT DESIGN.



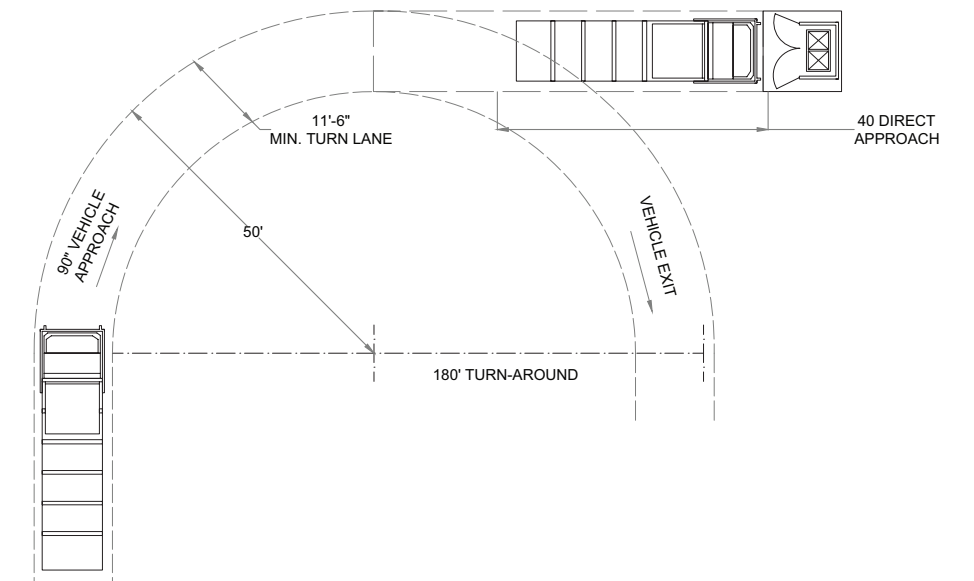
GATE HINGE
WELD TO FRAME AND TUBE
NOTE: PED-ACCESS GATE
TO BE SELF CLOSING



FLUTED GALVANIZED STEEL GATE
WELDED TO ANGLE FRAME

GATE CONNECTION EXAMPLE
NOT TO SCALE

DRAWING TITLE:	DATE:	SCALE:
OCEANSIDE # 2	08/16	NTS
	CODE:	SHEET:
	OS1	01 of 01



DRAWING TITLE:	DATE:	SCALE:
OCEANSIDE # 4	08/16	NTS
	CODE:	SHEET:
	OS1	01 of 01

Enclosure Construction Design Examples

WASTE ENCLOSURE DESIGN EXAMPLE # 1

ALL-WEATHER ROOF

6'-0"

6" THICK CONCRETE APRON

22'-3"

FRONT ELEVATION
NOT TO SCALE

• ALL MATERIAL MUST BE NONCOMBUSTIBLE AND COMPLIANT WITH CURRENT CALIFORNIA FIRE CODE.
• GENERAL ENCLOSURE EXAMPLES PROVIDED ARE NOT TO SCALE AND MAY REQUIRE ENGINEER/ARCHITECT DESIGN.

DRAWING TITLE:		DATE:	SCALE:
OCEANSIDE # 5		08/16	NTS
CODE:	SHEET:	OS1	01 of 01

6'-0"

SIDE ELEVATION

REAR ELEVATION

• ALL MATERIAL MUST BE NONCOMBUSTIBLE AND COMPLIANT WITH CURRENT CALIFORNIA FIRE CODE.
• GENERAL ENCLOSURE EXAMPLES PROVIDED ARE NOT TO SCALE AND MAY REQUIRE ENGINEER/ARCHITECT DESIGN.

DRAWING TITLE:		DATE:	SCALE:
OCEANSIDE # 6		08/16	NTS
CODE:	SHEET:	OS1	01 of 01

Enclosure Construction Design Examples

WASTE ENCLOSURE DESIGN EXAMPLE # 2

ALL-WEATHER ROOF

6'-0"

22'-0"

FRONT ELEVATION

• ALL MATERIAL MUST BE NONCOMBUSTIBLE AND COMPLIANT WITH CURRENT CALIFORNIA FIRE CODE.
• GENERAL ENCLOSURE EXAMPLES PROVIDED ARE NOT TO SCALE AND MAY REQUIRE ENGINEER/ARCHITECT DESIGN.

DRAWING TITLE:		DATE:	SCALE:
OCEANSIDE # 7		08/16	NTS
CODE:	SHEET:	OS1	01 of 01